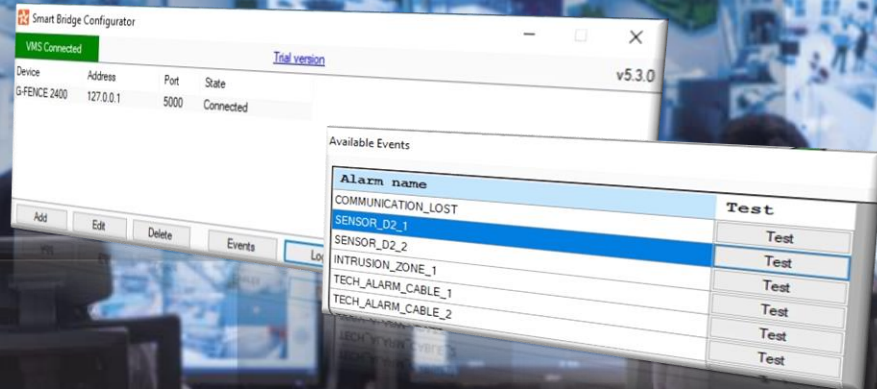




# SMARTBRIDGE

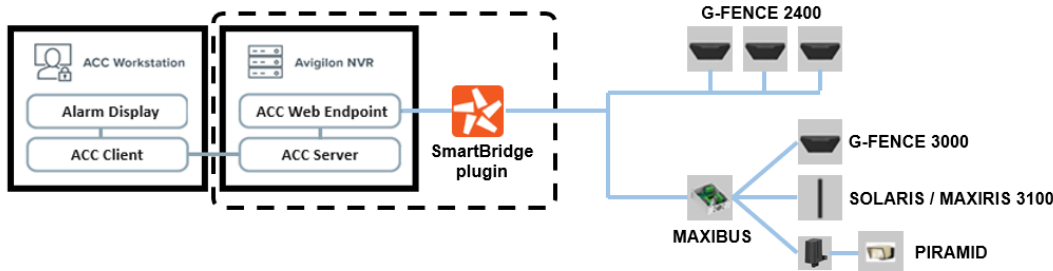
## INTEGRATING PERIMETER DETECTION WITH VIDEO MANAGEMENT SYSTEM



### SmartBridge Perimeter Intrusion System Gateway for VMS

Protech/Sorhea's Perimeter Intrusion Detection Systems (PIDS) utilize the MAXIBUS HUB or G-FENCE 2400 to send detection events to Avigilon VMS (Video Management System). The SmartBridge is a plug-in interface software product allowing detection devices to signal alarm events to the Avigilon VMS. This software interface is installed on the VMS event server and acts as a bridge between the MAXIBUS HUB or G-FENCE 2400 and the VMS. With the SmartBridge interface, it is possible to connect up to 256 Protech/Sorhea devices.

With SmartBridge and G-FENCE 2400, every sensor (fence panel) can now be an event inside of the VMS to apply an action such as moving a PTZ's.



#### EASY TO USE

SmartBridge is an easy and light software plugin that can be installed and configured in minutes. It has an auto-discovery of perimeter intrusion devices that makes it more flexible.

#### AVAILABLE GLOBALLY

SmartBridge is a based software product without any physical hardware that makes it easy to sell it globally.

#### SECURE COMMUNICATION

With the integration of Avigilon Web Endpoint API and HTTPS protocol, the communication is secured between SmartBridge and Avigilon server.

#### SUPPORTED COMPATIBLE VERSIONS

SmartBridge V5.4.0 and above  
Avigilon Unity Video V8.1.0.12 and above  
Avigilon Control Center V7.14.16.14 and above

### TOP BENEFITS

#### • Integrations

*SmartBridge product makes integration of perimeter intrusion detection devices more easy to compatible VMS with its simple interface.*

#### • Scalability

*With its up to 256 devices support, the SmartBridge is scalable and can be installed on VMS server side without additional hardware equipment.*

#### • Easy to use

*No need to use anymore hardware I/O box and wires to connect to VMS. SmartBridge makes it more easier with direct IP communication to VMS server such as Avigilon.*

For more information, visit : [www.protechusa.com](http://www.protechusa.com)

For online video demo, visit :

1-800-428-9662 • [sales@protechusa.com](mailto:sales@protechusa.com) • [www.protechusa.com](http://www.protechusa.com)

